

## Need help getting to school?

If your family lives in any of the following situations:

- On the street
- In a shelter, motel, vehicle, or campground
- In an abandoned building, or inadequate living accommodations
- Doubled up due to economic hardship or similar reason
- Some Transitional Housing programs

**You have the right to go to school and your local school district can help!**



**For additional information please contact:**

**Madison Metropolitan School District  
Transition Education Program (TEP)**

**Main Number : 608.204.2272**

**<http://stusvcweb.madison.k12.wi.us/TEP>**

**MMSD District Liaison: 608.663.5200**

## Resources for the Education of Homeless Children and Youth

### **Education for Homeless Children and Youth, Wisconsin Department of Public Instruction**

Phone: 1.800.441.4563

### **National Center for Homeless Education at SERVE (NCHE)**

[www.center.serve.org/nche/index.php](http://www.center.serve.org/nche/index.php)

Phone: 800.308.2145

### **National Association for the Education of Homeless Children and Youth (NAEHCY)**

[www.naehcy.org](http://www.naehcy.org)

Phone: 866.862.2562

Higher Education Hotline: 855.446.2673

### **National Law Center on Homelessness and Poverty (NLCHP)**

[www.NLCHP.org](http://www.NLCHP.org)

Phone: 202.638.2535

### **National Coalition for the Homeless (NCH)**

[www.nationalhomeless.org/](http://www.nationalhomeless.org/)

Phone: 202.462.4822

### **National Center on Family Homelessness**

[www.familyhomelessness.org](http://www.familyhomelessness.org)

Phone: 617.964.3834



MADISON METROPOLITAN SCHOOL DISTRICT



# TEP

## Transition Education Program

**Our goal** is to reduce barriers to school enrollment and achievement so that children from families who are experiencing homelessness have a **full and equal opportunity to succeed in school.**

*Services include, but are not limited to:*

- Advocacy
- School supplies
- Resource development
- Staff development
- Community education about homelessness and mobility
- Coordination with community partners
- Transportation

# Transition Education Program (TEP)

TEP has served homeless children and youth since 1989.



## Who is eligible for TEP?

Any school-aged student living in a shelter or other McKinney-Vento defined homeless situation is eligible. Families new to Madison may enroll immediately in the school of residence.

Current Madison families who become homeless may enroll their students in the attendance area where they are staying or, if feasible, continue to attend the school of origin.



## Who is homeless?

Students who lack a **fixed, regular, and adequate** nighttime residence, and are living in:

- A shelter
- Sharing housing due to economic hardship or similar reason
- Car, park, campground, abandoned building, or other inadequate accommodation
- Temporarily living in a motel or hotel due to loss of housing, economic hardship or similar reason
- Awaiting foster care
- Some Transitional Housing programs

A student may *also* be living in the above situations and not in the physical custody of a parent or guardian (unaccompanied youth).

## What is McKinney-Vento?

- Federal Law reauthorized with NCLB 2002
- The law provides a definition of homelessness, rights to students and families and responsibilities to States and school districts
- Designed to provide equal access to educational services, as well as reduce barriers to enrollment, attendance, and academic achievement.
- The goal is to provide educational stability while experiencing homelessness

## How many children experience homelessness?

- **1,168,354** children identified by U.S. Schools in 2011-2012
- **15,491** students in Wisconsin schools were identified as homeless in 2011-2012
- School districts in Dane County identified **1,696** students in 2011-2012

## Where do they go at night?

In 2013, Dane County Shelters served 3,370 individuals and 473 families.

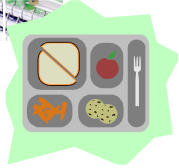
**28% of individuals served by shelters** in 2013 in Dane County were **children**.

**69% of students** identified by Madison Metropolitan School District in 2013-2014 were **“doubled-up”** and not in shelter.

Many families with children are living in cars, vans, abandoned buildings, camp grounds etc.

## MMSD ensures that TEP students receive:

- school supplies
- regular classroom placement 4K-12
- breakfast and lunch Programs
- comparable transportation



## And, if eligible:

- special education/early childhood
- title I
- summer school programming
- alternative programming

## In addition, TEP provides or assists with:

- family/personal hygiene supplies and basic needs
- consultation and direct support to schools and families
- information about after-school programming
- training and professional development in schools and community
- networking with community agencies and other school districts to provide seamless service delivery
- transportation to school related events, activities, meetings (while homeless)
- transition into new school(s)
- referrals and advocacy to community agencies as needed
- medical, dental and mental health advocacy and information
- referrals to Head Start
- support for students interested in pursuing advanced education.